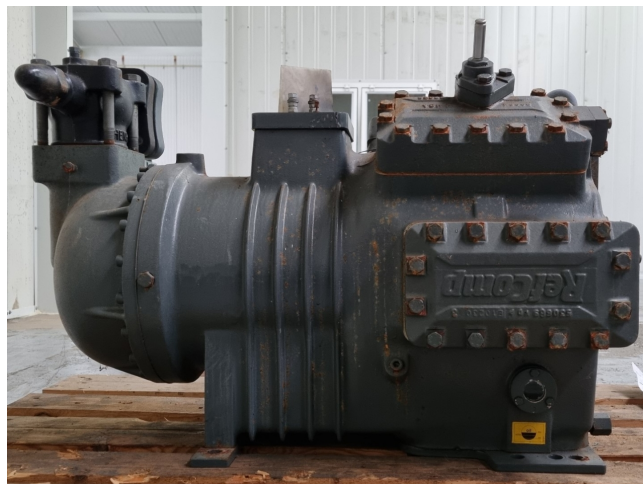


# Refcomp SRC-L-180-L2

## Specifications

Brand	Refcomp
Type	SRC-L-180-L2
Refrigerant	Freon
kW at 0°C/+40°C	182,0
kW at -5°C/+40°C	148,7
kW at -10°C/+40°C	119,4
kW at -20°C/+40°C	72,4
kW at -30°C/+40°C	41,0
m3 / h	210 m <sup>3</sup> /h
Remarks	Please notice that we sell this compressor only overhauled
Weight in kg.	384 kg
Sizes	950x550x620 mm (LxWxH)
Stock	1



## Description

### Used Refcomp SRC-L-180-L2

Overhauled Refcomp SRC-L-180-L2 semi-hermetic reciprocating compressor on Freon with a sight glass. The compressor has a displacement of 210 m<sup>3</sup>/h. We only offer the compressor overhauled and we can offer a fast delivery time. Please contact us for more information!

\*Why choose for HOSBV? We are not only the largest used refrigeration specialist in Europe, but also, we deliver all equipment including an extensive test, warranty and industrial cleaning. \*If requested we are happy to arrange your logistics.

